

COMPONENT SYSTEM

Create the desired length using 4 ft. & 5 ft. Ladder modules along with a variety of accessories & mounting options.

FEATURES

- Provides safe, easy & economic access
- Ladders Flat Packed Kit with rapid delivery
- Modular design serving multitude of length requirements
- Easy to store & install
- Assembled on site, no special tools necessary
- Non-slip Rungs ensure secure footholds & handholds
- Standard Finish is Safety Yellow Painted, also available in Galvanized finish
- OSHA Compliant Ladder



■ SPECIFICATIONS & APPEARANCE

>> CLICK TO VIEW ADDITIONAL DETAILS AND PRICING <<

LADDER:

Material: Steel ASTM A36
 Stringers: LAD-H: 2 1/2" x 3/8"
 Rungs: LAD-H: 1" dia
 Ladder Width: 20" inside
 Length: 4' & 5' (special lengths available on request)
 Weight: LAD-H: 10.5 Lbs/ft

CAGE:

Material: Steel ASTM A36
 Hoops: 2" x 1/4" Th.
 Straps: 1" x 3/16" Th.
 Weight: 8 Lbs/ft
 Height: 48"

TELESCOPIC SAFETY UPSTAND:

Material: Steel ASTM A36
 Extended height: 40" from top rung

LANDING GUIDE RAIL:

Material: Steel ASTM A36
 Extended height: 42" from top rung

HINGED GATE:

Material: 12 Ga. Steel ASTM A36
 Height: 7'

NOTE:

All application requirements are different depending on site conditions. We provided our Ladder System in modular parts to allow a perfect fit for all uses. All components are sold separately. See a parts list and sample reference on the back of this page.



Proprietary property of Acudor Products, Inc., sold and distributed with proper authorization



For a complete list of options visit www.AcudorAccessPanels.com

■ PROJECT DATA

Custom Sizes Available - Fast!

Scan or Click



To view Pricing and Additional Product Info.

| PROJECT NAME : | QTY | W | H | OPTIONS |
|------------------------|--|---|---|---------|
| ARCHITECT : | | | | |
| DEALER : | | | | |
| CONTRACTOR : | | | | |
| LOCATION : | SPECIAL INSTRUCTIONS : | | | |
| DATE : | | | | |
| TAGGING INSTRUCTIONS : | SUBMITTAL APPROVAL : (signature or stamp) | | | |

TELEPHONE:
1-888-622-8367

FAX:
1-888-626-2907



PO BOX 4668
 PMB 76520
 NEW YORK,
 NEW YORK 10163-4668
 US



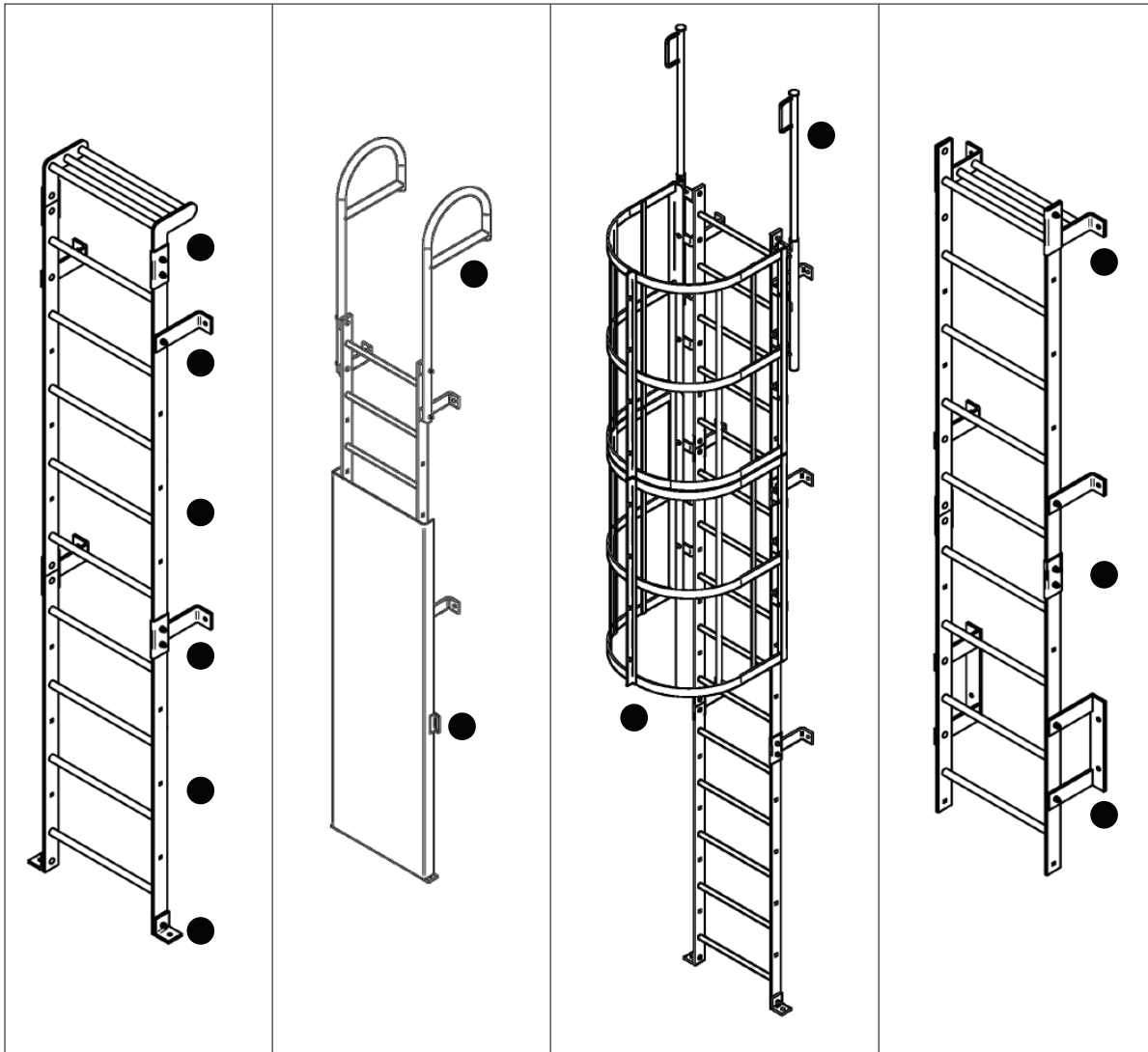
WEBSITE:
www.AcudorAccessPanels.com

E-MAIL:
info@AcudorAccessPanels.com



LAD-AL

FIXED SHAFT MODULAR LADDER SYSTEM - PARTS GUIDE



Sample configurations shown above are for illustrative purposes only. All components are sold separately



| ITEM | DESCRIPTION | PART# |
|------|--|-----------|
| 01 | Interior Landing Step c/w hardware * | LAD-LS-1 |
| 02 | Wall Bracket c/w hardware * (8 1/2" x 5/16") | LAD-WB-1 |
| 03 | 4'L Ladder | LAD-H-4 |
| | 5'L Ladder | LAD-H-5 |
| 04 | Wall Bracket Splice c/w hardware * (8 1/2" x 5/16") | LAD-WBS-1 |
| 05 | Floor Bracket c/w hardware * (2 3/4" x 2 3/4" x 5/16") | LAD-FB-1 |
| 06 | 4'Landing Guide Rail c/w mounting hardware * | LAD-LG-1 |

| ITEM | DESCRIPTION | PART# |
|------|---|------------|
| 07 | 7' Hinged Gate c/w Hinges, Lock Hasp & hardware* | LAD-HG-1 |
| 08 | Telescoping Safety Upstand c/w hardware * (2') | LAD-TSPU-2 |
| 09 | 48" Safety Cage c/w hardware * | LAD-CG-1 |
| 10 | Exterior Landing Step c/w hardware * | LAD-LS-2 |
| 11 | Splice Plate c/w hardware * (10 Ga) | LAD-SP-1 |
| 12 | Off-Floor Wall Bracket c/w hardware * (8 1/2" x 14 1/2" x 5/16") | LAD-WBO-2 |

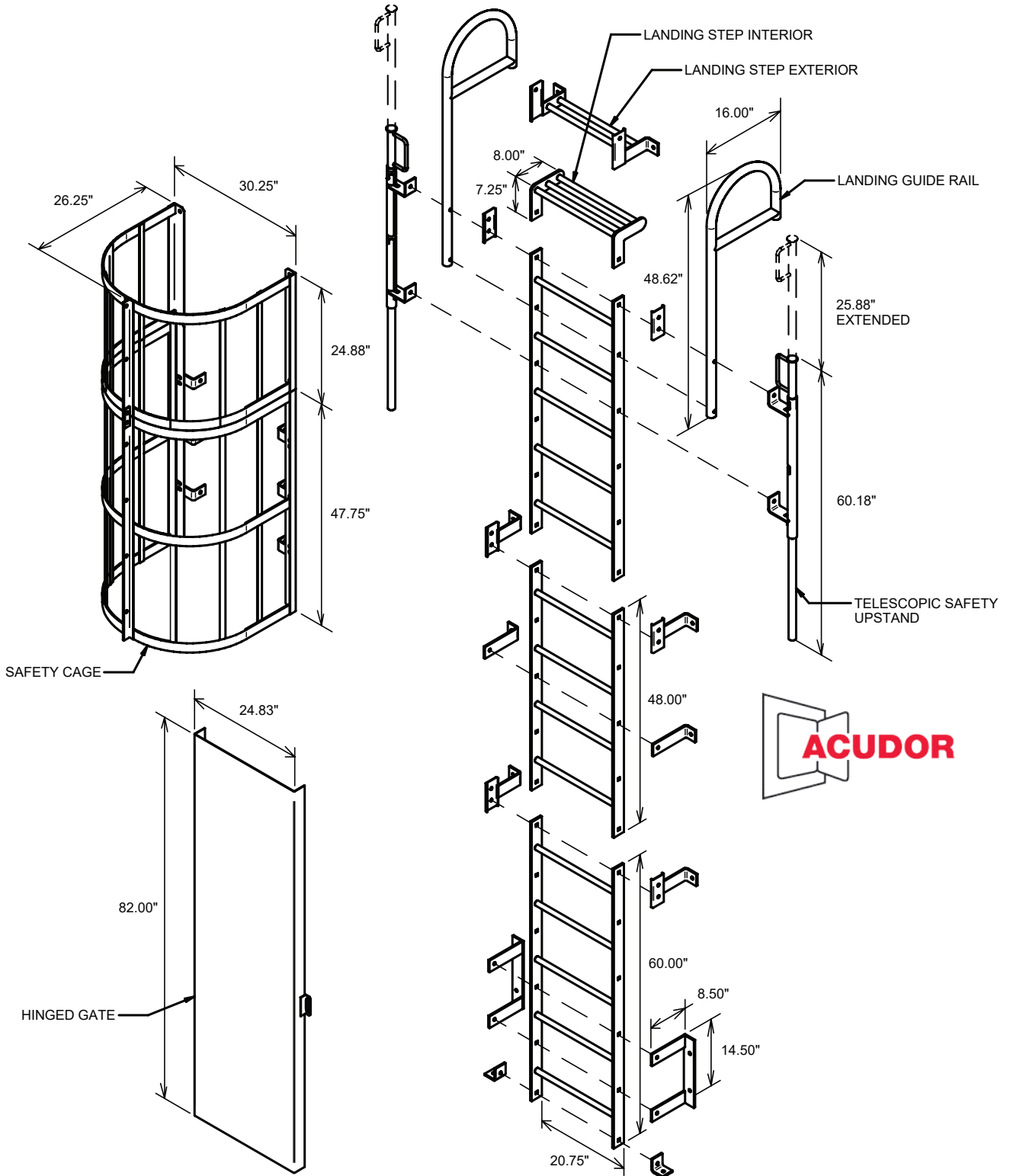
Additional component material specifications available on request

* All mounting hardware mounts parts to ladder and not ladder to the wall or floor. Carriage Bolts (1/2-13 x 1 1/2") are included

Proprietary property of Acudor Products, Inc., sold and distributed with proper authorization

LAD-AL

STEEL LADDER - HEAVY DUTY



HEAVY DUTY LADDER (2-1/2" X 3/8" STRINGER, 1" DIA. RUNG)
STANDARD LADDER MODULES: 48.00" AND 60.00" (CAN COMBINE TO DIFFERENT LENGTHS)
FINISH: POWDER COATED TO SAFELY YELLOW AND GALVANIZED

Proprietary property of Acudor Products, Inc., sold and distributed with proper authorization