

### APPLICATION

Designed for interior and exterior applications that require an access opening that will blend in with the surrounding floor material

### FEATURES

- To keep the floor material from cracking or chipping within the door panel, the securing screws are located in the flange of the mounting frame
- FT-8080: Recessed 1/8" to accommodate carpeting and vinyl tile
- FT-8080-1: Recessed 1" to accommodate ceramic tile/concrete

### SPECIFICATIONS

**MATERIAL:** Aluminum

**DOOR FT-8080:** 1/4" smooth aluminum plate reinforced for live load of 150 lb/sq. ft., recessed 1/8" for carpet/vinyl tile

**DOOR FT-8080-1:** 1/4" smooth aluminum plate reinforced for live loads of 150 lb/sq. ft. / recessed 1" for ceramic tile/concrete

**FRAME:** 1-1/2" x 1-1/4" aluminum angle with mounting holes in top flange

**STANDARD LATCH:** Door panel is secured to frame with 1/4" x 1" flat head screws

**FINISH:** Mill finish



SKU: **FT8080**

**FLOOR DOOR NON HINGED  
PANEL RECESSED 1/8"**

FOR VINYL TILE/CARPET

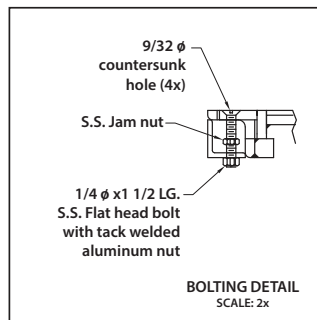
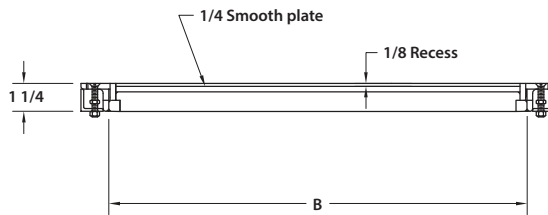
### DIMENSIONS AND APPEARANCE

>> CLICK TO VIEW ADDITIONAL DETAILS AND PRICING <<

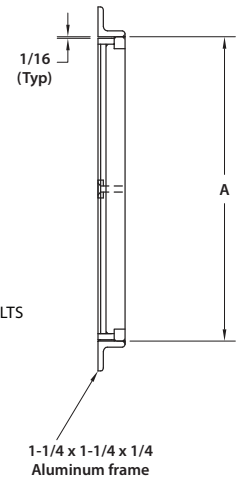
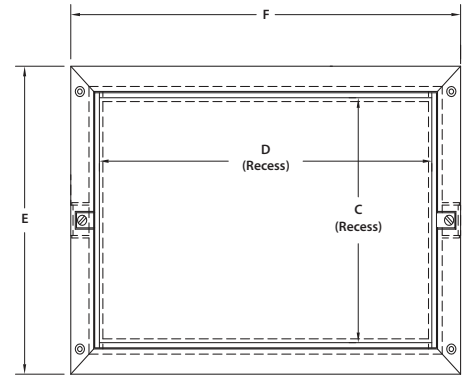
#### STANDARD SIZES:

| DOOR SIZE W x H<br>INCHES (MM) | WEIGHT |    |
|--------------------------------|--------|----|
|                                | LBS    | KG |
| 8 x 8 (203 x 203)              | 6      | 3  |
| 12 x 12 (305 x 305)            | 9      | 4  |
| 18 x 18 (457 x 457)            | 18     | 8  |
| 24 x 24 (610 x 610)            | 36     | 16 |

For detailed specifications see submittal sheet



- NOTES:
- MATERIAL: ALUMINUM
  - LOADING: 150 LBS. PER SQ. FT.
  - 316 STAINLESS STEEL NUTS & BOLTS





For a complete list of options visit [www.AcudorAccessPanels.com](http://www.AcudorAccessPanels.com)

Proprietary property of Acudor Products, Inc., sold and distributed with proper authorization

### PROJECT DATA

Custom Sizes Available - Fast!

| PROJECT NAME :         | QTY  | W | H | OPTIONS |
|------------------------|--|---|---|---------|
| ARCHITECT :            |  |   |   |         |
| DEALER :               |  |   |   |         |
| CONTRACTOR :           |  |   |   |         |
| LOCATION :             | SPECIAL INSTRUCTIONS :                       |   |   |         |
| DATE :                 |  |   |   |         |
| TAGGING INSTRUCTIONS : | SUBMITTAL APPROVAL :<br>(signature or stamp) |   |   |         |

Scan  or  Click



To view Pricing and Additional Product Info.



TELEPHONE:  
1-888-622-8367  
FAX:  
1-888-626-2907



PO BOX 4668  
PMB 76520  
NEW YORK,  
NEW YORK 10163-4668  
US

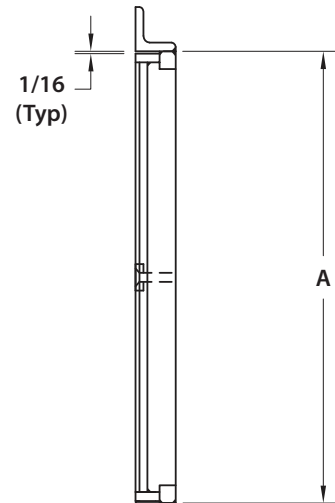
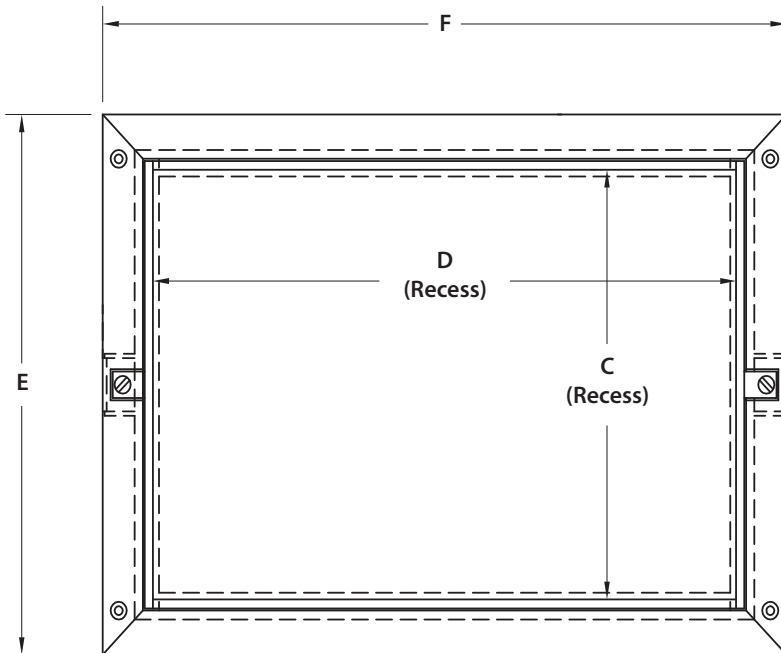


WEBSITE:  
[www.AcudorAccessPanels.com](http://www.AcudorAccessPanels.com)  
E-MAIL:  
[info@AcudorAccessPanels.com](mailto:info@AcudorAccessPanels.com)

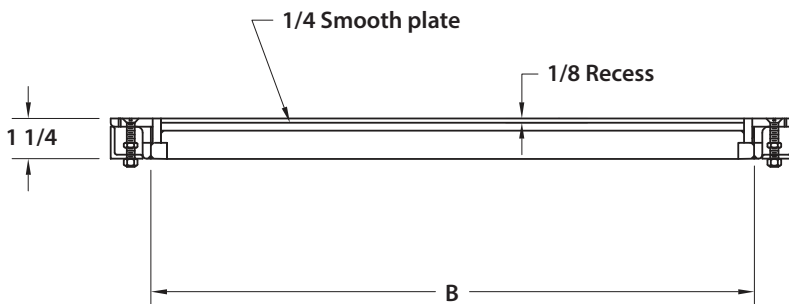
## FT8080

# NON-HINGED PANEL RECESSED 1/8" FOR VINYL TILE/CARPET

| NOMINAL DOOR SIZE | FRAME LD.    |              | RECEIVING AREA |              | OVERALL SIZE |              | WEIGHT     |
|-------------------|--------------|--------------|----------------|--------------|--------------|--------------|------------|
|                   | in. (mm)     | A in. (mm)   | B in. (mm)     | C in. (mm)   | D in. (mm)   | E in. (mm)   | F in. (mm) |
| 8 x 8             | 8-3/4 (222)  | 8-3/4 (222)  | 8.125 (206)    | 8.125 (206)  | 11.250 (286) | 11.250 (286) | 6 (3)      |
| 12 x 12           | 12-3/4 (324) | 12-3/4 (324) | 12.125 (308)   | 12.125 (308) | 15.250 (387) | 15.250 (387) | 9 (4)      |
| 18 x 18           | 18-3/4 (476) | 18-3/4 (476) | 18.125 (460)   | 18.125 (460) | 21.250 (540) | 21.250 (540) | 18 (8)     |
| 24 x 24           | 24-3/4 (629) | 24-3/4 (629) | 24.125 (613)   | 24.125 (613) | 27.250 (692) | 27.250 (692) | 36 (16)    |



1-1/4 x 1-1/4 x 1/4 Aluminum frame



- NOTES:
- MATERIAL: ALUMINUM
  - LOADING: 150 LBS. PER SQ. FT.
  - 316 STAINLESS STEEL NUTS & BOLTS

