

APPLICATION

This recessed access door is ideal for use on Acoustical drywall walls and ceilings where maintaining STC (Sound Transmission Class) and OITC (Outdoor Indoor Transmission Class) is required. The unique taping bead flange allows for a concealed finish.

FEATURES

- Zinc coated steel provides superior corrosion resistance
- Drywall taping bead flange
- Recessed door fitted with 5/8" thick drywall, ensures finish similar to surrounding
- Tested and evaluated to ASTM: E90(09), ASTM: E413(16), ASTM: E1332(16) and certified to STC Rating 64 and OITC Rating 53

SPECIFICATIONS

MATERIAL: 18 Gauge Satin Coat Steel

DOOR: 18 Gauge recessed design filled with 1 1/2" thick acoustic mineral liner, 0.11" thick mineral filled vinyl barrier and fitted with 5/8" thick drywall as finished face

FRAME: 18 Gauge, press bent for strength and rigidity, drywall taping bead flange Insulated with 1" thick acoustical mineral liner

GASKET: Silicone perimeter seal gasket

HINGE: Continuous exposed stainless steel piano hinge

STANDARD LOCK: Screw driver operated Compression Latch

OPTIONAL LOCK: Compression Latch with Hex Head, Hex with security pin, Square, Triangle

ACOUSTIC RATING: This door has been tested and evaluated to ASTM: E90(09), ASTM: E413(16), ASTM: E1332(16) and certified to STC Rating 64 and OITC Rating 53.

FINISH: Satin Coat Steel



SKU: **ACD-2064**

SPECIALTY DOORS

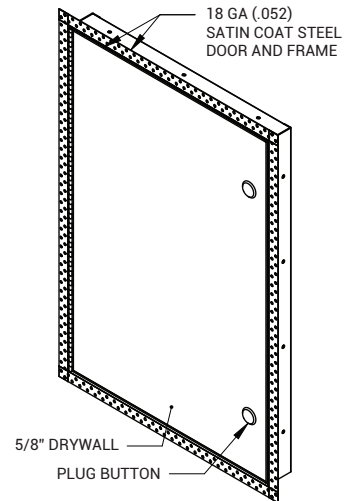
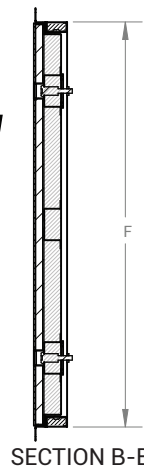
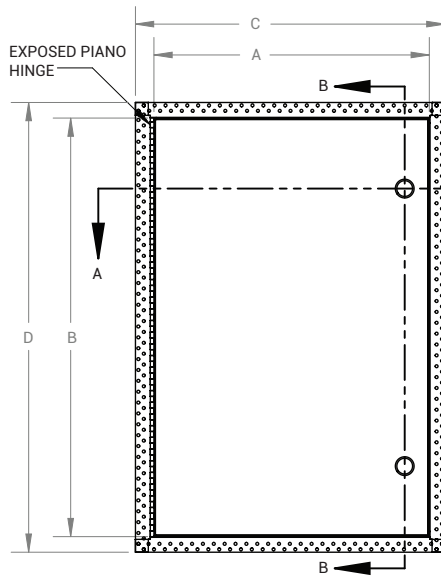
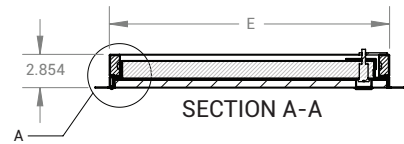
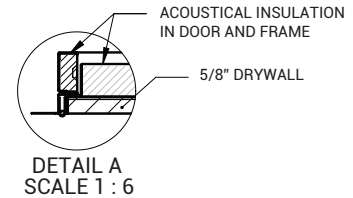
RECESSED ACOUSTICAL ACCESS DOOR

DIMENSIONS AND APPEARANCE

>> CLICK TO VIEW ADDITIONAL DETAILS AND PRICING <<

STANDARD SIZES:

DOOR SIZE W x H INCHES	(MM)	LATCHES	WEIGHT	
			LBS	KG
12 x 12	(305 x 305)	1	13.2	6
18 x 18	(457 x 457)	1	24.3	11
24 x 24	(610 x 610)	1	41.9	19
24 x 36	(610 x 914)	2	62.0	28



For a complete list of options visit www.AcudorAccessPanels.com

PROJECT DATA

Custom Sizes Available - Fast!

Scan or Click



To view Pricing and Additional Product Info.

PROJECT NAME :	QTY	W	H	OPTIONS
ARCHITECT :				
DEALER :				
CONTRACTOR :				
LOCATION :	SPECIAL INSTRUCTIONS :			
DATE :				
TAGGING INSTRUCTIONS :	SUBMITTAL APPROVAL : (signature or stamp)			

TELEPHONE:
1-888-622-8367

FAX:
1-888-626-2907



PO BOX 4668
PMB 76520
NEW YORK,
NEW YORK 10163-4668
US



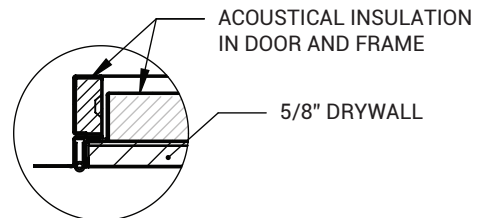
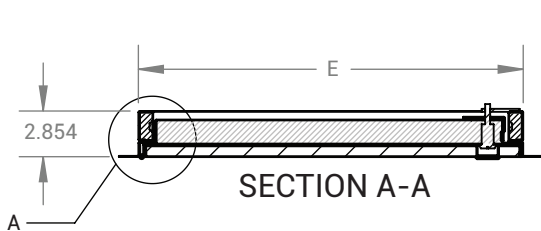
WEBSITE:
www.AcudorAccessPanels.com

E-MAIL:
info@AcudorAccessPanels.com

ACD-2064

DRYWALL ACOUSTICAL ACCESS DOOR

NOMINAL SIZE	A	B	C	D	E	F	LOCK QTY
12 x 12 (305mm x 305mm)	11.567 (294mm)	11.818 (300mm)	14.484 (368mm)	14.484 (368mm)	12.044 (306mm)	12.044 (306mm)	1
16 x 16 (406mm x 406mm)	15.567 (395mm)	15.818 (402mm)	18.484 (469mm)	18.484 (469mm)	16.044 (408mm)	16.044 (408mm)	1
18 x 18 (457mm x 457mm)	17.567 (446mm)	17.818 (453mm)	20.484 (520mm)	20.484 (520mm)	18.044 (458mm)	18.044 (458mm)	1
24 x 24 (610mm x 610mm)	23.567 (599mm)	23.818 (605mm)	26.484 (673mm)	26.484 (673mm)	24.044 (611mm)	24.044 (611mm)	1
24 x 36 (610mm x 914mm)	23.567 (599mm)	35.818 (910mm)	26.484 (673mm)	38.484 (977mm)	24.044 (611mm)	36.044 (915mm)	2



DETAIL A
SCALE 1 : 6

