

### APPLICATION

This flush access door is ideal for use on Acoustical walls and ceilings where maintaining STC Rating (Sound Transmission Class) and OITC Rating (Outdoor Indoor Transmission Class) is required.

### FEATURES

- Zinc coated steel provides superior corrosion resistance
- Type 304 Stainless steel with #4 satin polish also available
- Tested and evaluated to ASTM: E90(09), ASTM: E413(16), ASTM: E1332(16) and certified to STC Rating 64 and OITC Rating 54

### SPECIFICATIONS

**MATERIAL:** 18 Gauge Satin Coat Steel

**DOOR:** 18 Gauge, encapsulated design with 2" thick acoustical mineral liner and 0.11" thick mineral filled vinyl barrier

**FRAME:** 18 Gauge, press bent for strength and rigidity, with 1" wide trim flanges and 1" thick acoustical mineral liner

**GASKET:** Silicone perimeter seal gasket

**HINGE:** Continuous exposed stainless steel piano hinge

**STANDARD LOCK:** Screw driver operated Compression Latch

**ACOUSTIC RATING:** This door has been tested and evaluated to ASTM: E90(09), ASTM: E413(16), ASTM: E1332(16) and certified to STC Rating 64 and OITC Rating 54.

**FINISH:** 5 stage iron phosphate preparation with prime coat of white baked-on enamel



SKU: **ACF-2064**

# SPECIALTY DOORS

STEEL FLUSH ACOUSTICAL ACCESS DOOR

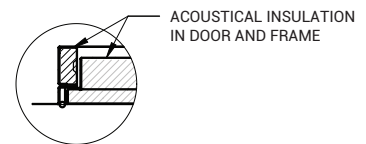


### DIMENSIONS AND APPEARANCE

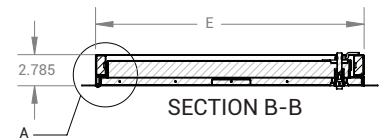
>> CLICK TO VIEW ADDITIONAL DETAILS AND PRICING <<

#### STANDARD SIZES:

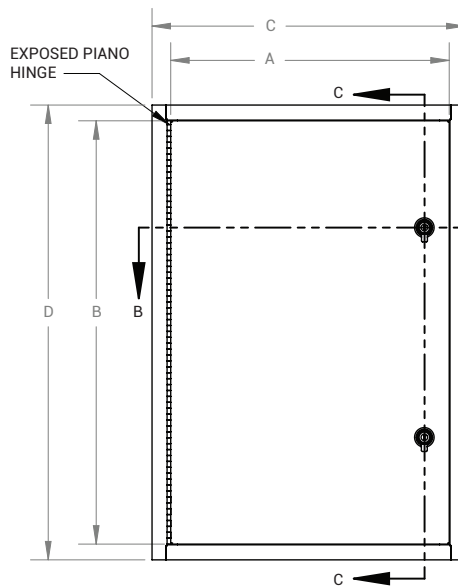
DOOR SIZE W x H INCHES (MM)	LATCHES	WEIGHT	
		LBS	KG
12 x 12 (305 x 305)	1	14.3	6.5
18 x 18 (457 x 457)	1	26.5	12
24 x 24 (610 x 610)	1	44.0	20
24 x 36 (610 x 914)	2	64.0	29



DETAIL A  
SCALE 1 : 6



18 GA (.052)  
SATIN COAT STEEL  
DOOR AND FRAME



SECTION C-C

STAINLESS STEEL  
PULL TAB



For a complete list of options visit  
[www.AcudorAccessPanels.com](http://www.AcudorAccessPanels.com)

### PROJECT DATA

Custom Sizes Available - Fast!

Scan or Click



To view Pricing and  
Additional Product Info.

PROJECT NAME :	QTY	W	H	OPTIONS
ARCHITECT :				
DEALER :				
CONTRACTOR :				
LOCATION :	SPECIAL INSTRUCTIONS :			
DATE :				
TAGGING INSTRUCTIONS :	SUBMITTAL APPROVAL : (signature or stamp)			

TELEPHONE:  
1-800-622-8367  
FAX:  
1-888-626-2907



PO BOX 4668  
PMB 76520  
NEW YORK,  
NEW YORK 10163-4668  
US

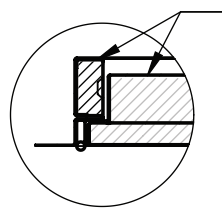
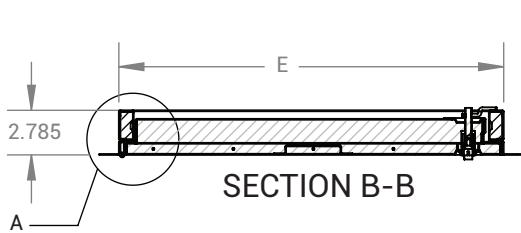


WEBSITE:  
[www.AcudorAccessPanels.com](http://www.AcudorAccessPanels.com)  
E-MAIL:  
[info@AcudorAccessPanels.com](mailto:info@AcudorAccessPanels.com)

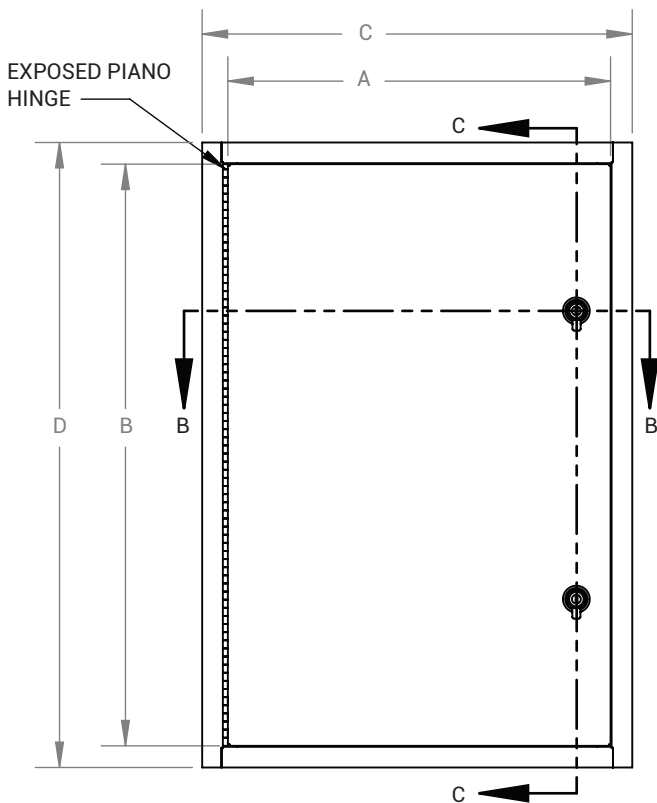
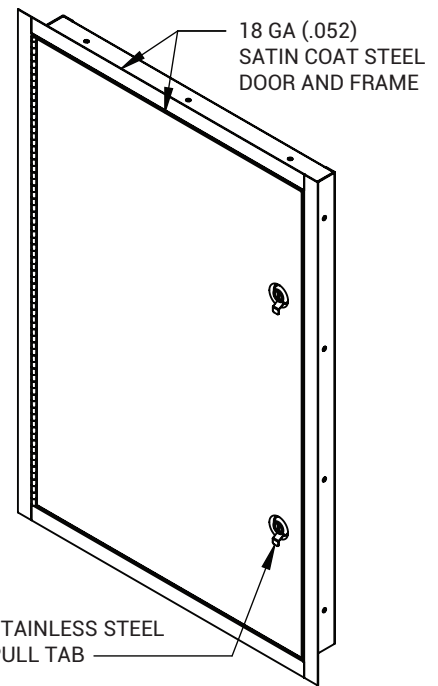
# ACF-2064

# FLUSH ACOUSTICAL ACCESS DOOR

NOMINAL SIZE	A	B	C	D	E	F	LOCK QTY
12 x 12 (305mm x 305mm)	11.567 (294mm)	11.818 (300mm)	14.484 (368mm)	14.484 (368mm)	12.044 (306mm)	12.044 (306mm)	1
16 x 16 (406mm x 406mm)	15.567 (395mm)	15.818 (402mm)	18.484 (469mm)	18.484 (469mm)	16.044 (408mm)	16.044 (408mm)	1
18 x 18 (457mm x 457mm)	17.567 (446mm)	17.818 (453mm)	20.484 (520mm)	20.484 (520mm)	18.044 (458mm)	18.044 (458mm)	1
24 x 24 (610mm x 610mm)	23.567 (599mm)	23.818 (605mm)	26.484 (673mm)	26.484 (673mm)	24.044 (611mm)	24.044 (611mm)	1
24 x 36 (610mm x 914mm)	23.567 (599mm)	35.818 (910mm)	26.484 (673mm)	38.484 (977mm)	24.044 (611mm)	36.044 (915mm)	2



ACOUSTICAL INSULATION  
IN DOOR AND FRAME



SECTION C-C



**STANDARD FEATURES:**  
18GA (.052) SATIN COAT STEEL  
PRIME COAT WHITE  
SLOTTED COMPRESSION LATCH

**ACOUSTIC RATING:**  
TESTED AND EVALUATED TO  
ASTM: E90(09), ASTM: E413(16), ASTM: E1332(16)  
CERTIFIED TO STC RATING 64 AND OITC RATING 54